



ALCA[®]

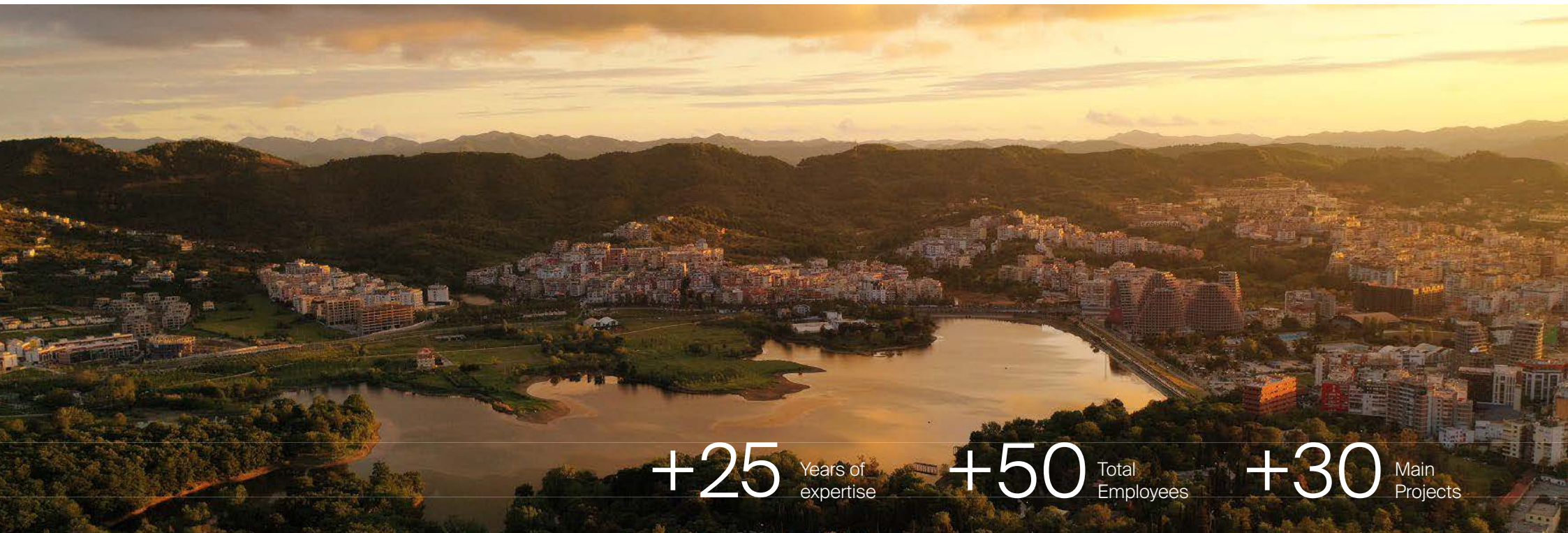
ARCHITECTURAL FACADES



ABOUT US

ALCA specializes in the design, engineering, project management, manufacture, and installation of curtain walls and building façade systems in Albania and Italy. Our growth is driven by strategic partnerships with leading suppliers, landmark projects with globally renowned architects, and a strong commitment to innovation in our production facilities.

As a family-owned business that has grown and developed sustainably over more than two decades, we prioritize long-term relationships over short-term gains, placing a deep sense of responsibility and transparency towards our clients and partners.



+25 Years of expertise

+50 Total Employees

+30 Main Projects

MISSION

Our mission is to create iconic structures that stand as testaments to innovation, precision and quality. We lead with expertise, powered by a commitment to excellence and a unique drive to shape the skylines of the cities of the future.

VALUES

PEOPLE

We recognize in people a primary asset and we strive to enhance the abilities and skills of everyone.

TRANSPARENCY

Trust is the basis for everything we do and the prerequisite for our success.

SUSTAINABILITY

Securing the company's long-term success while at the same time protecting the natural environment for future generations.

INNOVATION

We aim at continuously improving our products and working methods through technological innovation.



OUR APPROACH



1

Consulting

We provide tailored, innovative solutions that bring the architect's and client's vision to life. Our early engagement approach ensures close collaboration with all stakeholders from the concept design stage.



2

Design

This phase includes feasibility studies, pre-construction services, structural and physical calculations, thermal analysis, advanced 3D modeling, and parametric design.



3

Mock-ups

We offer a variety of mock-ups and testing options, covering both standard and niche use cases. These include material compatibility checks, material sampling, 3D prints, VMU and PMU.



4

Production

Our production capabilities enable us to efficiently deliver high-complexity custom projects that meet strict quality and timeline requirements. We ensure efficiency without compromising precision.



5

Logistics

We work closely with site managers and stakeholders to optimize storage and maximize efficiency. Our logistics team is fully synchronized with production and project management, ensuring flexible façade shipping.



6

Installation

A precise delivery plan ensures timely material arrivals, while our site managers oversee the entire process on-site, ensuring seamless execution and serving as the primary client contact.

All of our façades come with a service warranty which provides for comprehensive support, and our team will be on hand to address any issues.

DESIGN AND ENGINEERING



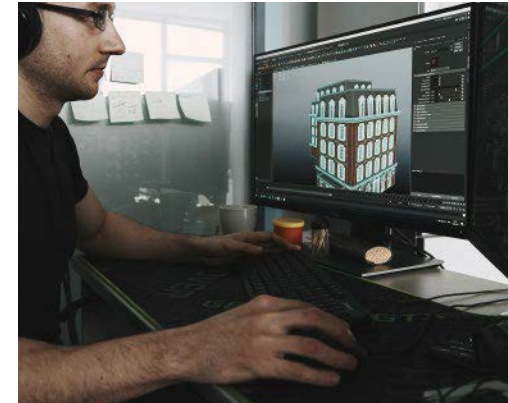
Structural & thermal analysis

We utilize software to analyze system behavior under various wind and thermal load conditions.



System design

We create customized profiles tailored to each project, ensuring proven system performance and reliability.



Modeling

We use 3D modeling to detect clashes between façade elements and the surrounding construction.



PRODUCTION

ALCA's production system combines advanced CNC workcenters and automated lines to guarantee precision, efficiency, and consistent quality at every stage of manufacturing. Certified across all major product categories - from curtain walls and custom façades to windows, doors, skylights, and interior systems - our facility is designed to deliver scale without compromising on detail.

With more than +20 specialized workcenters, our workflow integrates CNC milling, cutting, punching, bending, and finishing of aluminum profiles, ensuring smooth coordination across processes while minimizing errors and material waste. Continuous investment in technology and automation further strengthens our capacity and reflects our long-term commitment to innovation and excellence in production.



Curtain walls



Doors and
Windows



Double Skin



Ventilated
facade



Skylight



Shading systems

2.000m²

Manufacturing Facility

+75.000m²

Curtain wall per year

PARTNERS

Suppliers



Architects



KEY PROJECTS







Ekspozita Building

Ekspozita Building is a 24-story mixed-use tower inspired by the silhouette of the Balkan mountains. Its form introduces a new green oasis to the city's dense urban fabric while maximizing open space, occupying just 44% of its plot. Wrapped in lush terraced gardens, the building blends architecture and nature, offering a sense of tranquility amid the city's dynamic rhythm. Designed with sustainability in mind, its integrated shading system naturally regulates temperature, reducing energy consumption by 30% and enhancing comfort for residents and visitors alike.

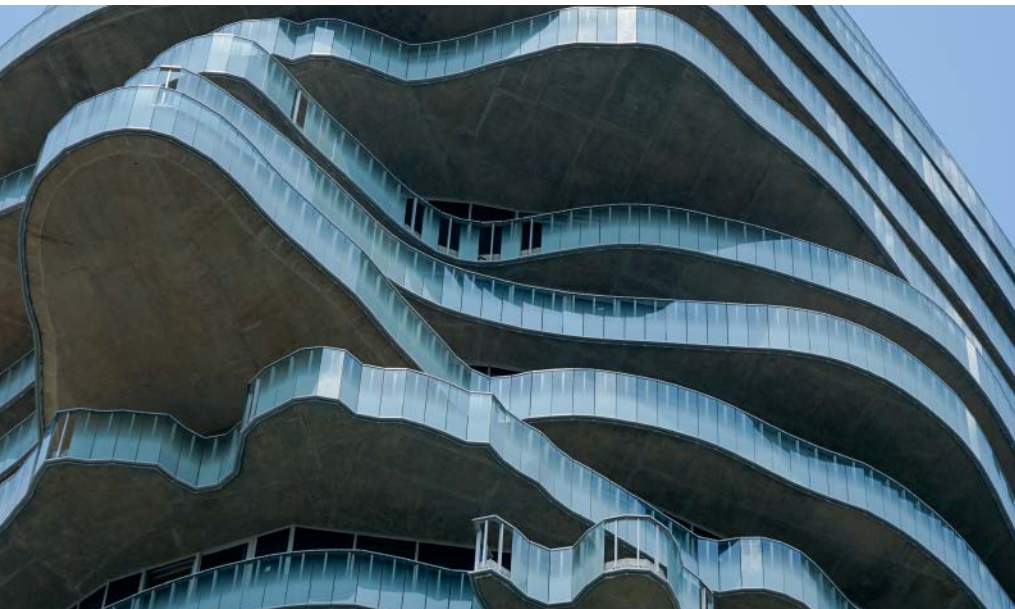
Client: Victoria Construction Sh.p.k
Location: Tirana, Albania
Architects: MCA

mca mario
cucinella
architects

Year: On-Going
Type: Residential, Commercial
Ventilated façade, 10.000 sqm
Stick façade, 6.600 sqm
Sunshades, 4.000 m







Tirana's Rock

Tirana's Rock is a mixed-use project that – at 85 metres tall and sculpted into the shape of a bust of Albania's national hero – will be among the world's largest buildings that double as a figurative sculpture. Wrapped in curving balconies that form the shape of the head of Skanderbeg, the building will be an iconic landmark at the very centre of Albania's capital, celebrating and assimilating into the country's cultural history while giving Tirana a unique identity unlike any other capital city.

Client: ANA & V&V Sh.p.k
Location: Tirana, Albania
Architects: MVRDV

MVRDV

Year: On-Going
Type: Residential, Commercial
Custom façade, 10.000 sqm
Parapet 6.000 sqm







National Art Gallery

ALCA is proud to deliver the façade package for the revitalization of Albania's National Art Gallery - a project designed by Atelier 4 that respects the institution's modernist heritage while introducing a contemporary extension. Our work restores the original building and brings the new wing to life, unifying past and future with precision craftsmanship and technical excellence.

Client: 4A-M sh.p.k
Location: Tirana, Albania
Architects: Atelier 4



Year: On-Going
Type: Public
Glass façade, 2.000 sqm
Double skin, 1850 sqm







Vertical Forest

Vertical Forest Tirana, designed by Stefano Boeri Architetti, is a 21-storey residential tower, featuring 550 sqm of green surface. The façade seamlessly integrates with the nearby Grand Park and the detailed craftsmanship of our workers enhance the building's aesthetic appeal while contributing to sustainability by providing natural insulation and improving air quality. We were responsible for the entire custom façade of the building.

Client: Gener 2 sh.p.k
Location: Tirana, Albania
Architects: Stefano Boeri

BOERI
STEFANO
BOERI
ARCHITETTI

Year: 2024
Type: Residential
Custom façade, 7.000 sqm







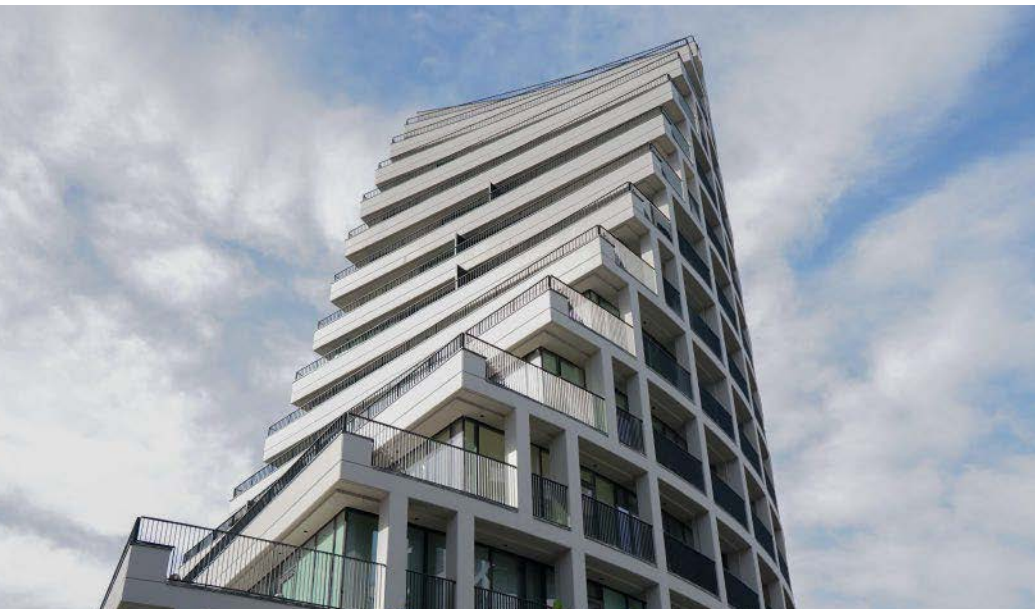
Lake View Residences

Lake View Residences is a complex of five building blocks designed by JA Joubert Architecture. The buildings are designed to slope and fold into the site, maximizing views of the city skyline and surrounding mountains. End houses have full-width terraces with sunken planters for greenery and shade. ALCA was responsible for the design, production, and installation of the entire façade of the complex, consisting of 26,000 sqm of curtain walls.

Client: Gener 2 sh.p.k
Location: Tirana, Albania
Architects: Marc Joubert (JA)

JA

Year: 2024
Type: Residential, Commercial
Stick façade, 26.000 sqm







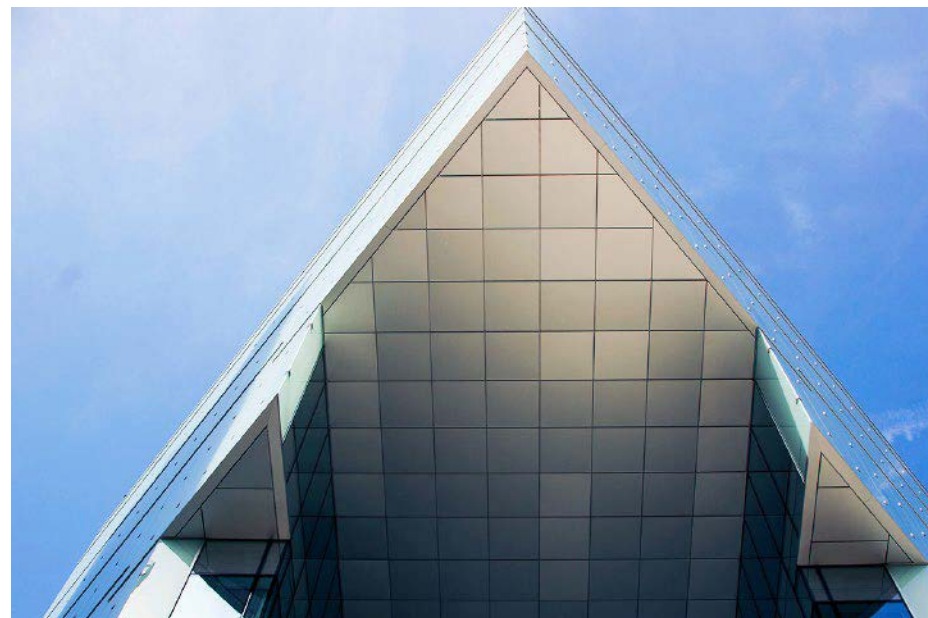
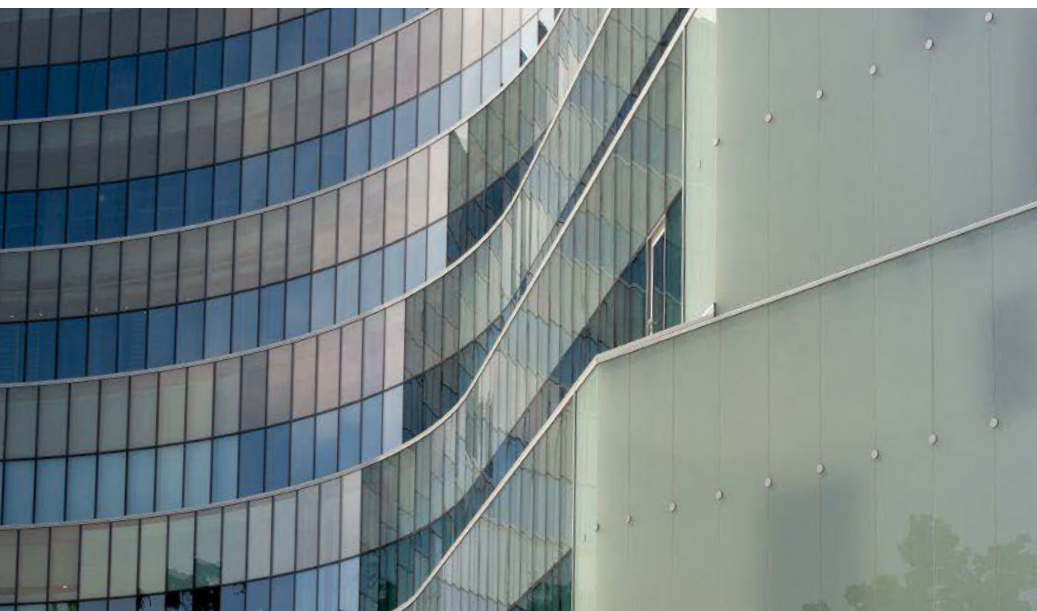
Toptani Shopping Center

Toptani Shopping Center spans over 13,000 sqm of stick and cladding façades. Completed in 2017 and designed by MVRDV, it offers a mix of retail stores, entertainment facilities, and dining options, providing a comprehensive shopping experience. The façade, accessible through stairs and balconies, engages the city and extends urban life

Client: Gener 2 Sh.p.k
Location: Tirana, Albania
Architects: MVRDV

MVRDV

Year: 2017
Type: Commercial
Stick façade and claddings,
13.680 sqm



 **RING**
TIRANARING CENTER

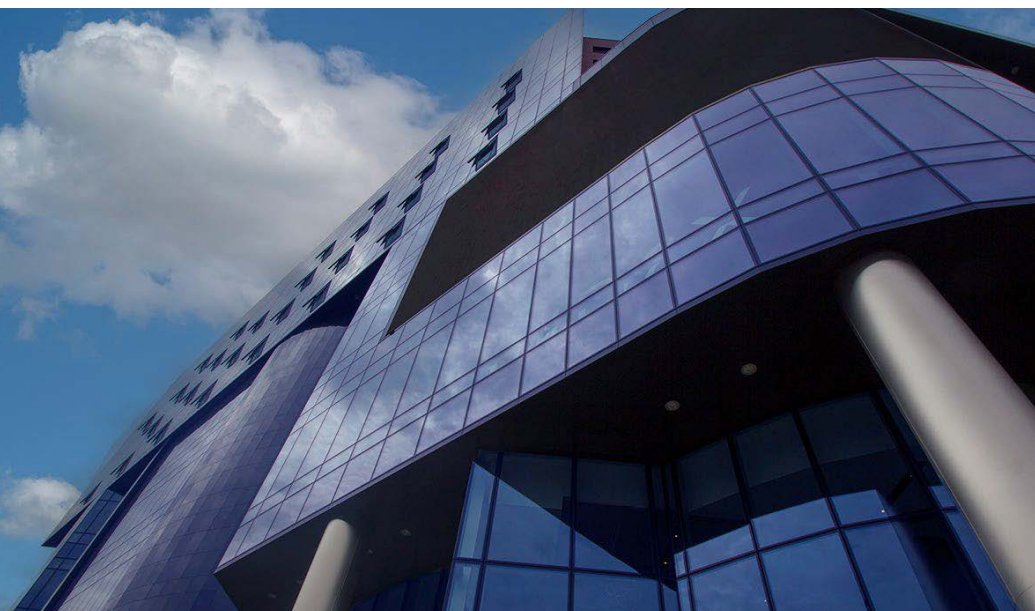


Ring Center

Tirana Ring Center is a mix of commercial and residential spaces covering a total of 51,000 sqm, among which a stick facade which incorporates screens for advertisements. Completed in 2014, the center offers a comprehensive experience with over 70 brands, entertainment spaces, restaurants, and high comfort amenities, including a food court and extensive parking facilities.

Client: Vigand Sh.p.k
Location: Tirana, Albania
Architects: Ark. Spiro Bakallboshi & Ark. Suela Veizoti

Year: 2014
Type: Commercial
Stick façade, 5,120 sqm







Millennium Business Center

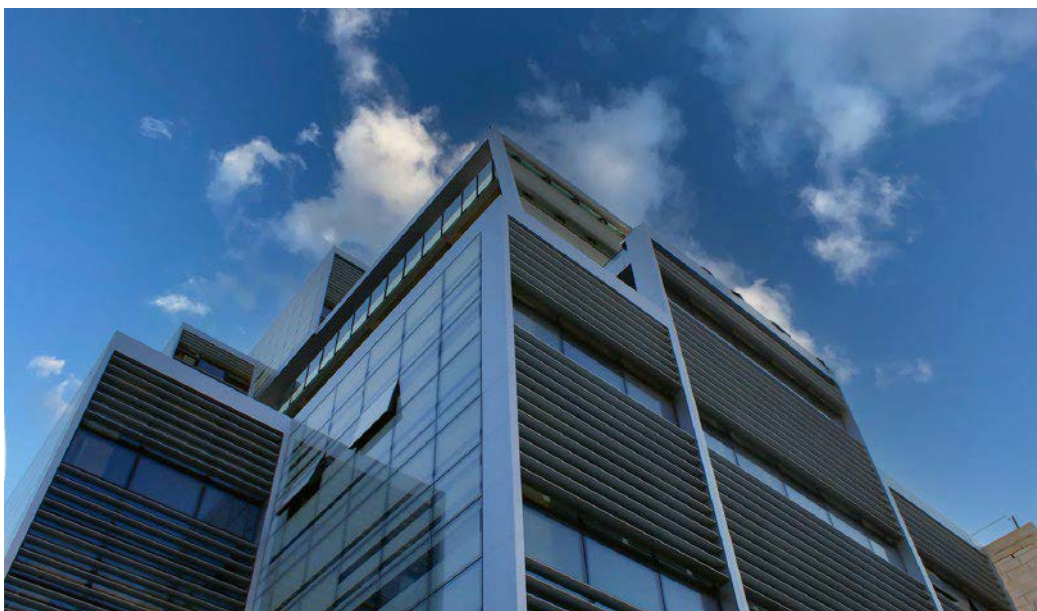
Millennium Business Center is a multifunctional building combining retail and office spaces. Completed in 2013, the nine-story, 40-meter-high structure offers around 10,000 sqm of space. The façade is made of 60,000 kg of aluminum and the design features high-quality doors, windows, and shutters, ensuring regulatory compliance. The finishes, coordinated by world-renowned Architecturestudio, use Anthracite Grey and oxidized silver for a harmonious aesthetic.

XX CONCORSO
INTERNAZIONALE
SISTEMA D'AUTORE
METRA
2013

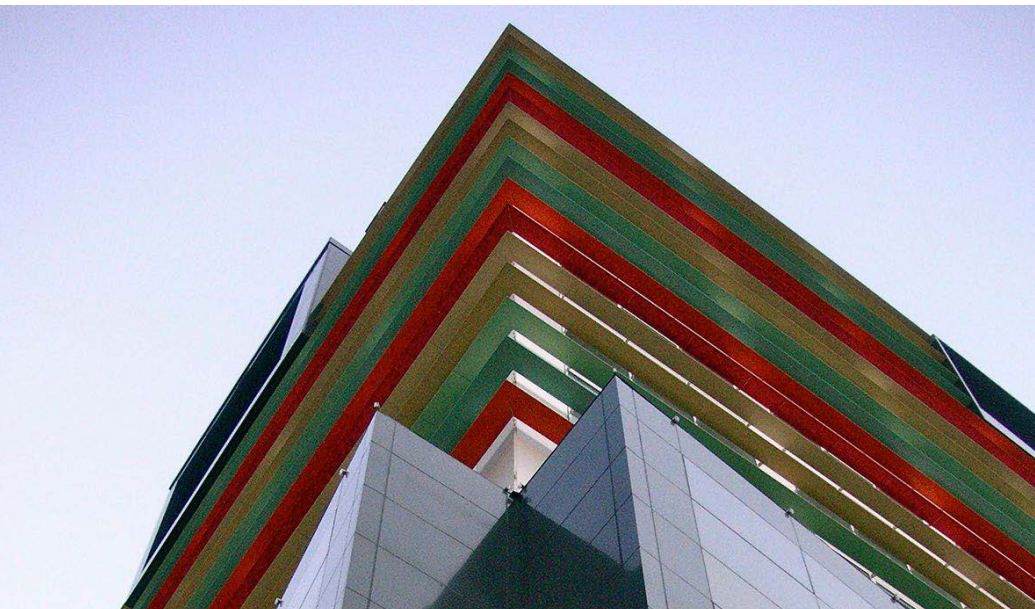
Client: Millennium Group
Location: Tirana, Albania
Architects: AS architecturestudio

architecturestudio,

Year: 2013
Type: Mixed
Stick façade and shading system,
6,540 sqm







ABA Business Center

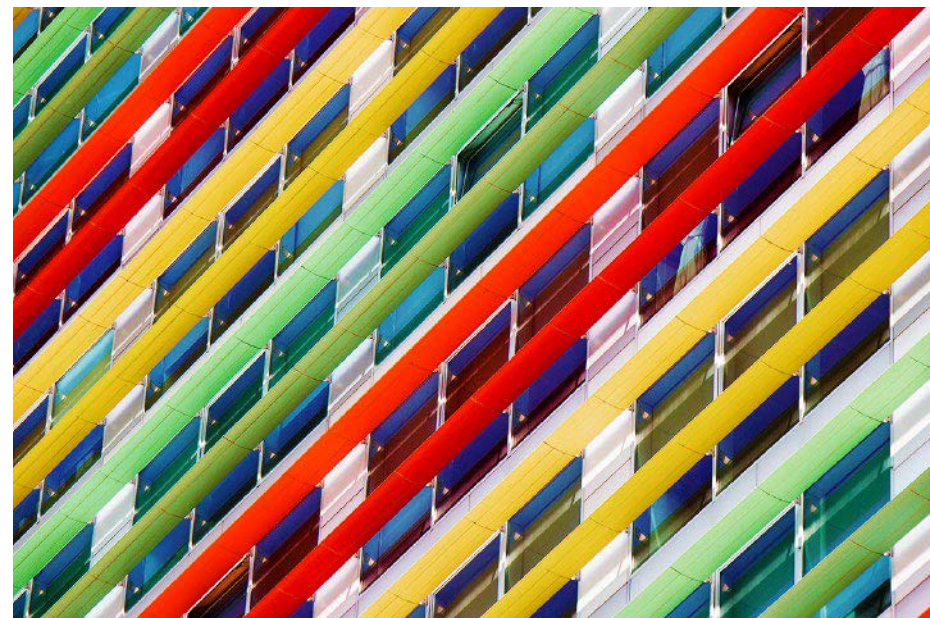
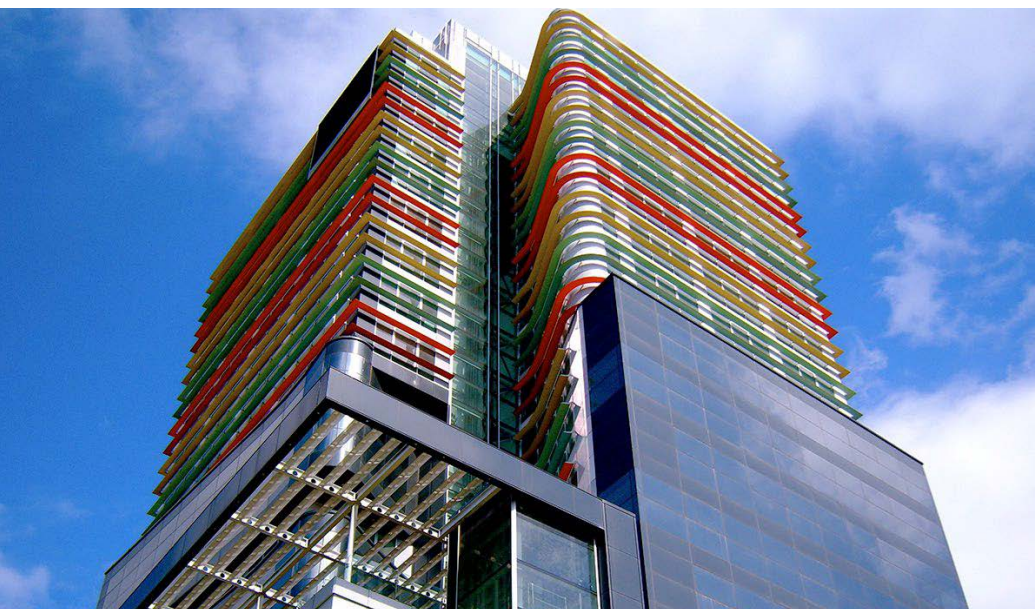
Completed in 2008 and designed by Bolles+Wilson, ABA Business Center was the tallest building in Albania at that time. This 83-meter high mixed-use high-rise in Tirana features 21 floors above ground and 3 underground levels for parking. The building encompasses 12.000 sqm, combining a stick façade with a shading system, and serves as a modern architectural landmark, blending office and commercial spaces.

XVI CONCORSO
SISTEMA D'AUTORE
METRA
2008

Client: Gener 2 Sh.p.k
Location: Tirana, Albania
Architects: Bolles+Wilson
GmbH & Co. KG

BOLLES+WILSON

Year: 2008
Type: Commercial
Stick façade and shading system,
12.000 sqm



Salillari Residence

Salillari Residence is a residential complex located near the Tirana Zoo and just a short distance from the Artificial Lake. ALCA took care of the whole 5,000 sqm ventilated façade, partnering with Ceramiche Refin for the stunning "river" collection tiles that, thanks to the enveloping aesthetic effect and the soft relief structure, create a precise and sophisticated identity for the whole building.

Client: Salillari Sh.p.k
Location: Tirana, Albania
Architects: Salillari Sh.p.k



Year: 2024
Type: Residential
Ventilated façade, 5.000 sqm





Air Traffic Control Tower

We completed the Air Traffic Control (A.N.T.A) Tower for Tirana International Airport (TIA), which is managed by ALBCONTROL. This state-owned joint-stock company, operating under the Ministry of Economy, Culture, and Innovation, ensures safe and high-quality air navigation services within Albanian airspace.

Our work on the tower supports ALBCONTROL's critical role in the regional air traffic management sector, allowing them to efficiently and securely manage takeoffs, landings, and overflights in Albania.

Client: ALBCONTROL
Location: Tirana, Albania

Year: 2011
Type: Transportation
Stick façade, 3.620 sqm



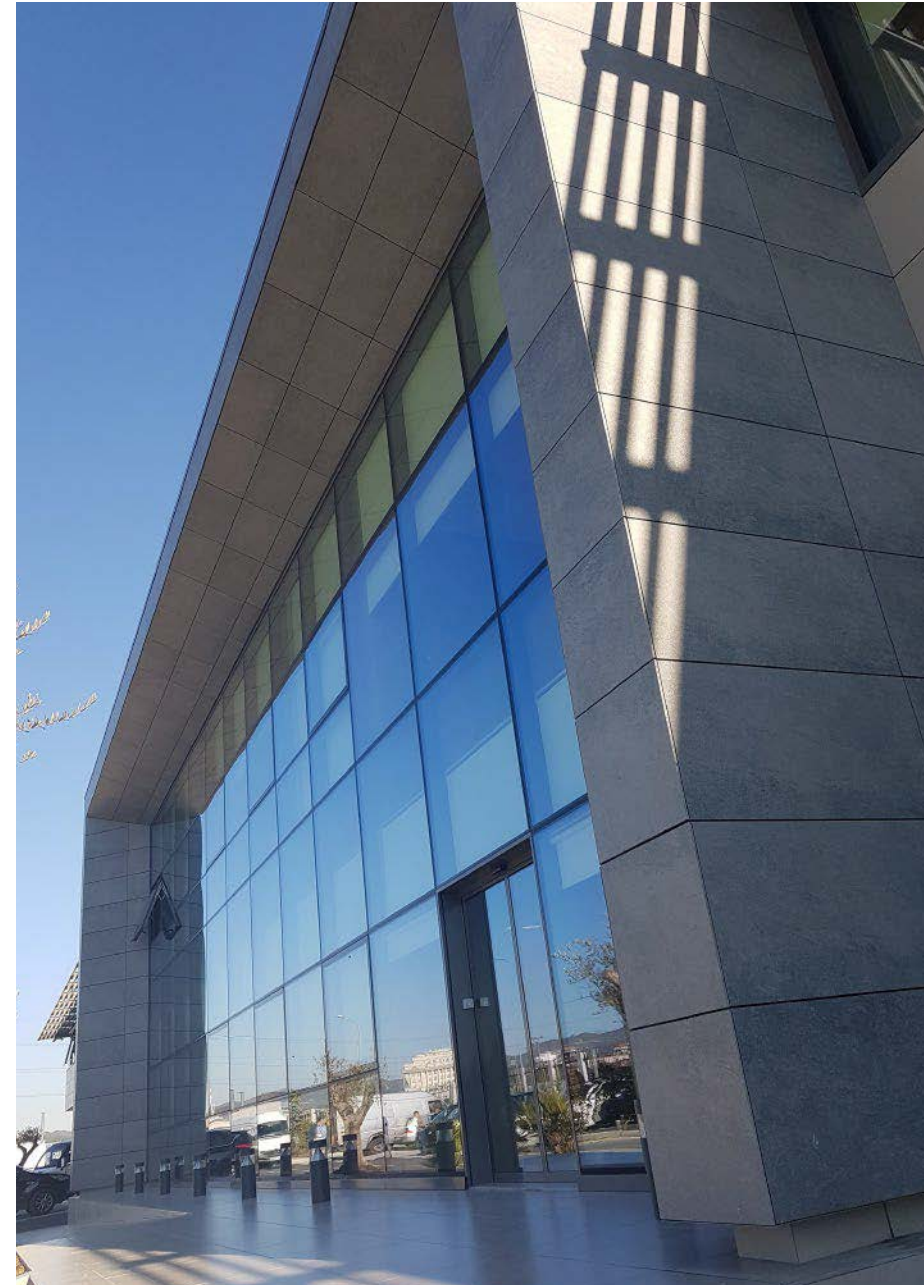
InfoSoft Group

Algrafika, founded in 1999, part of InfoSoft Group is the largest independent trading company in Albania. It supplies paper and cardboard to over 300 printing houses. The company's headquarters in Tirana features a modern office facility of 1,600 sqm and a warehouse capacity of 8,200 sqm. ALCA, did the glass façades (E85 - Etem), ventilated façades with Gres porcelain, various types of doors (E75 - Etem, automatic doors by Geze), windows (E45 / E1000 - Etem), and aluminum composite panel.

Client: InfoSoft Sh.p.k , Algrafika Sh.p.k
Location: Tirana, Albania
Architects: ALCA Sh.p.k

ALCA®

Year: 2017
Type: Office
Stick façade, cladding and shading system, 3.200 sqm





Costa Container Lines

Located in Sampierdarena within the Fiumara complex in Genoa, the project involved renovating a 19th-century warehouse, previously used as a projectiles factory, into modern offices for Costa Container Lines. The renovation preserved the building's industrial heritage, maintaining its cast iron columns, wooden beams, and floors. The 7.000 sqm features a full-height central area with natural lighting, enclosed by a glazed roof and large windows supported by a metal structure, and steel bands highlighting the floors sequence.

Client: COOPSETTE S.C.AR.L.
Location: Genova, Italy
Architects: Arch. Nicolò De Mari
& Casareto dal Verme

Year: 2004
Type: Commercial
Project surface: 22.000 sqm



ALCA Sh.p.k

In 2005, four years after the company's foundation, we completed the façades of our own building with an all-glass design. This project marked a significant milestone for us and set a strong foundation for our continued success and expansion.

Client: ALCA Sh.p.k
Location: Tirana, Albania
Architects: ALCA Sh.p.k

ALCA

Year: 2005
Type: Office
Stick façade, 700 sqm





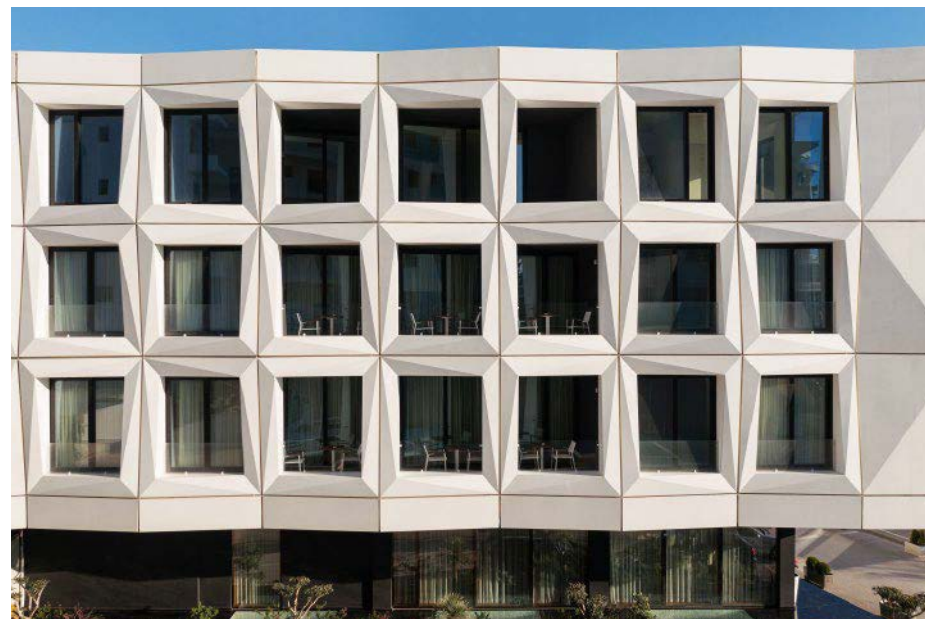
Chic Boutique Hotel

The first impression when you look at this building is that resembles origami. The sharp edges, the movement of the modules in all the directions, the wide windows of the 3 upper levels make this building a unique one. Façades are the most striking and visible parts of the hotel and are one of the main contributors to creating comfortable environments and capable to adapt to the environmental conditions of the place where it is located.

Client: Chic Boutique Hotel
Location: Vlorë, Albania
Architects: Stile Progetti Associates

StileProgetti
Associated

Year: 2019
Type: Hospitality
Stick façade 500 sqm







+355 69 708 4250
info@alca.al



Autostrada Tirane-Durres, km 11,
1051, Tirana, Albania

www.alca.al

