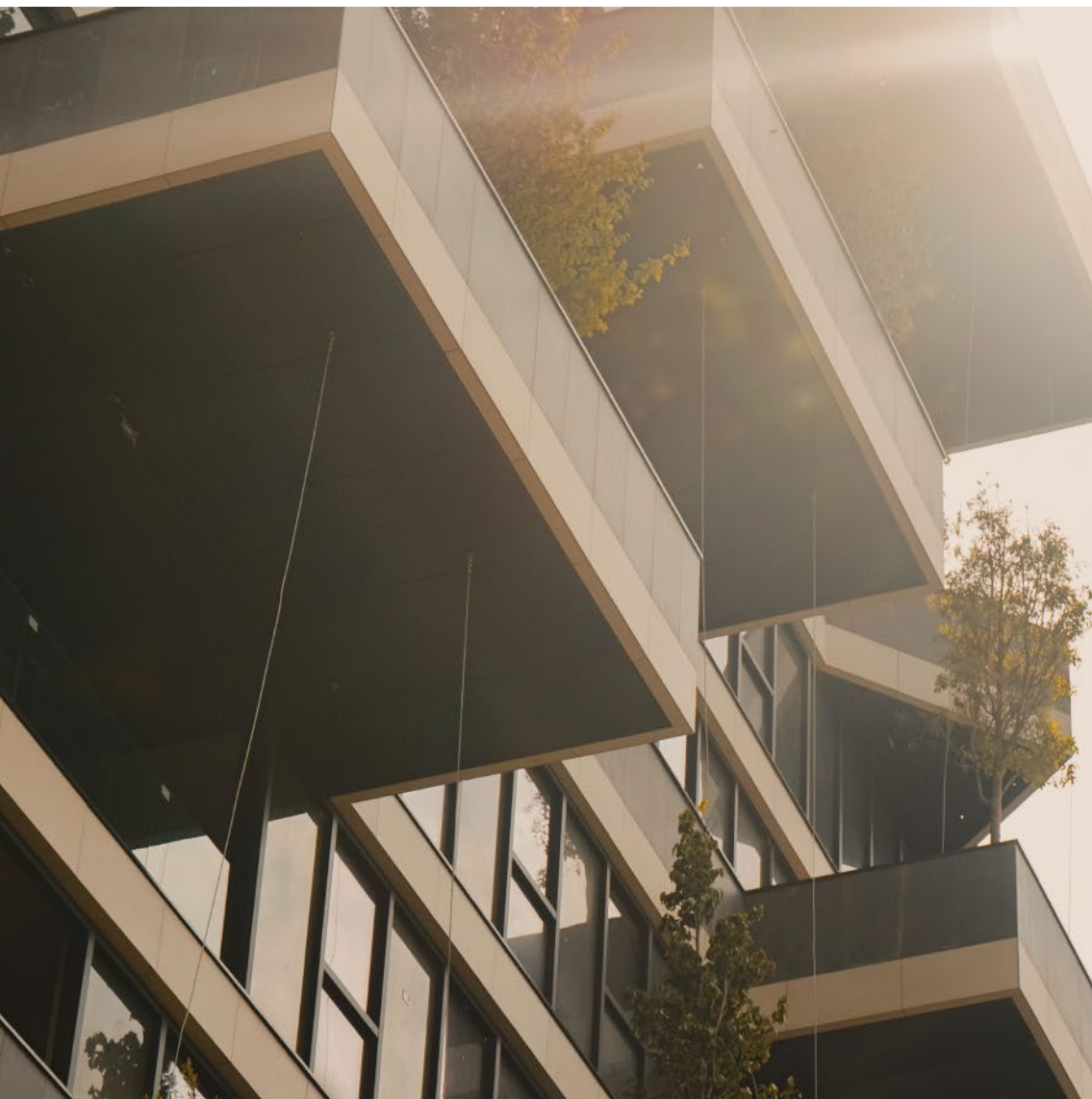




ALCA[®]

Curtain Walls and Windows

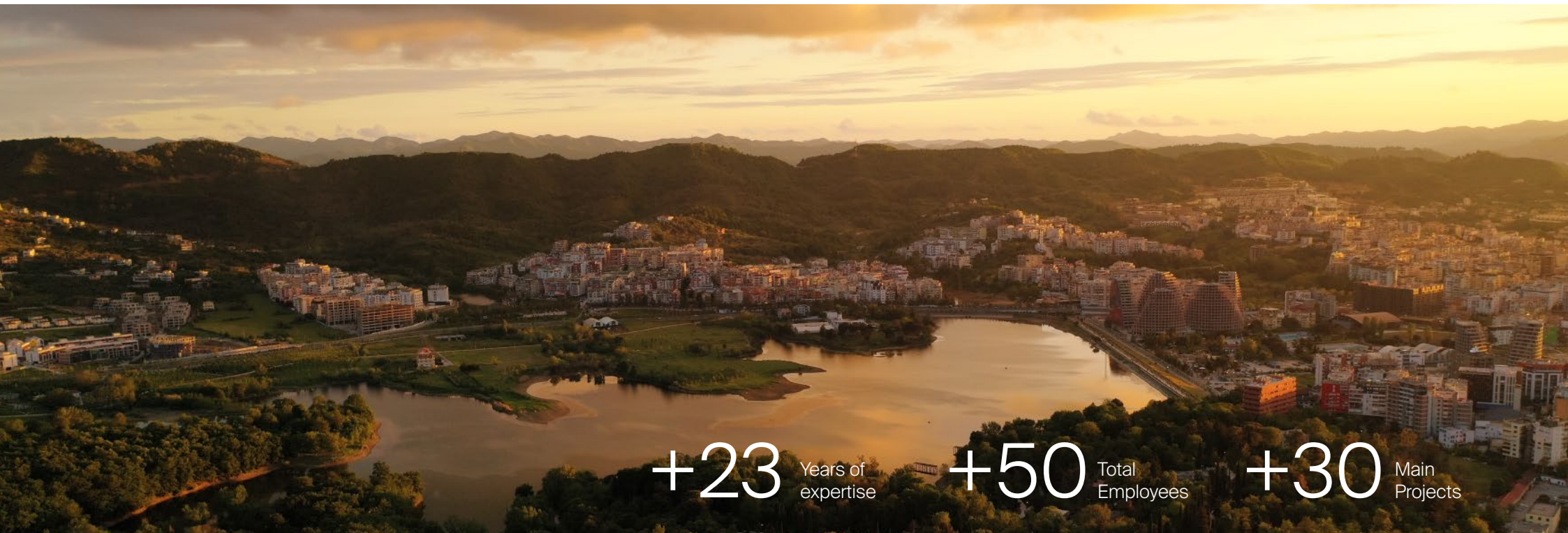


For decades, our company has stood out for its outstanding craftsmanship, technical excellence and implementation expertise. Founded by a visionary who started from zero, we have become the leading company in Albania for facades. Our headquarters are in Tirana, a fast-developing city that reflects our dynamic and innovative spirit. From this base, we create architectural milestones, ensuring our continuing success and dependability.

ABOUT US

Founded in 2001, ALCA specializes in the design, engineering, project management, manufacture, and installation of curtain walls and building facade systems in Albania and Italy. Our growth is driven by strategic partnerships with leading suppliers, landmark projects with globally renowned architects, and a strong commitment to innovation in our production facilities.

As a family-owned business that has grown and developed sustainably over more than two decades, we prioritize long-term relationships over short-term gains, placing a deep sense of responsibility and transparency towards our clients and partners.



+23 Years of
expertise

+50 Total
Employees

+30 Main
Projects

MISSION

Our mission is to create iconic structures that stand as testaments to innovation, precision and quality. We lead with expertise, powered by a commitment to excellence and a unique drive to shape the skylines of the cities of the future.

VALUES

PEOPLE

We recognize in people a primary asset and we strive to enhance the abilities and skills of everyone.

TRANSPARENCY

Trust is the basis for everything we do and the prerequisite for our success.

SUSTAINABILITY

Securing the company's long-term success while at the same time protecting the natural environment for future generations.

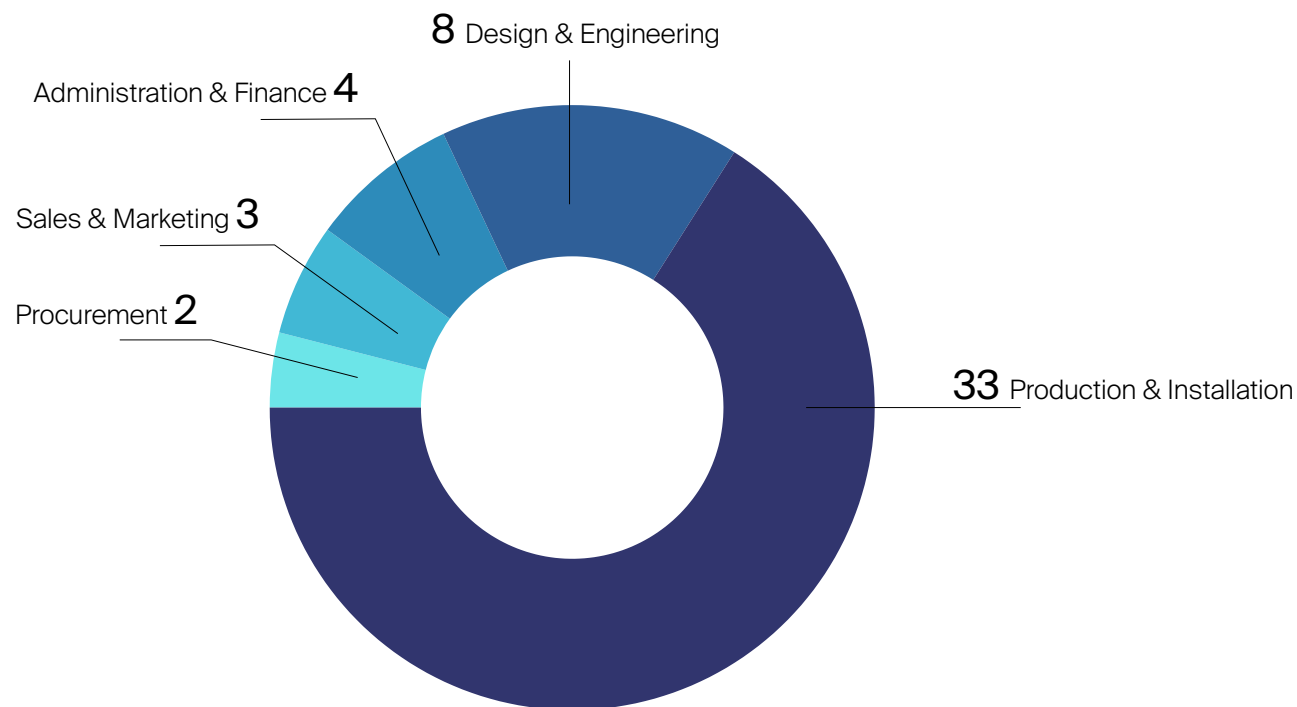
INNOVATION

We aim at continuously improving our products and working methods through technological innovation.



PEOPLE

At ALCA, our people are our greatest asset, and their success drives our success. We are dedicated to continuously nurturing and developing our team, culture, and working methods. With a diverse and committed team bringing deep experience and fresh perspectives, we value long-term loyalty and expertise.



36%

of our offices employees are women

10%

employee growth rate for the past 5 years

OUR APPROACH



1

Consulting

We deliver tailored and innovative solutions that fully realize the vision of both the architect and the client. Our approach involves early engagement, working collaboratively with all stakeholders from the concept design stage. By consulting closely with the client, we ensure that our solutions are aligned with their goals and expectations.



2

Design

This phase includes feasibility analysis, pre-construction services, structural and physical calculations, thermal analysis, advanced 3D modeling, parametric design.



3

Mock-ups

We provide different types of mockups and testing options to cover both frequent and niche use-cases, such as material compatibility, material sampling, 3D prints, visual mock-ups and performance mock-ups (PMU).



4

Production

Our extensive production capabilities allow us to efficiently deliver high-complexity custom projects that meet our clients' quality and time-frame demands. Our production area is able to produce around 75.000 sqm of curtain walls per year.



5

Logistics

We work closely with site managers and other stakeholders to minimize on-site storage and maximize efficiency. Our experienced logistics team is strictly aligned with the production team and project managers to ensure façade shipping is organised quickly and flexibly.



6

Installation

We focus on creating solutions that can be efficiently installed in various conditions. A precise delivery plan is developed to ensure the necessary materials arrive on time. Our site managers remain on site during installation, overseeing the process from A to Z and serving as the contact person for the client.

All of our façades come with a service warranty which provides for comprehensive support, and our team will be on hand to address any issues.

DESIGN AND ENGINEERING



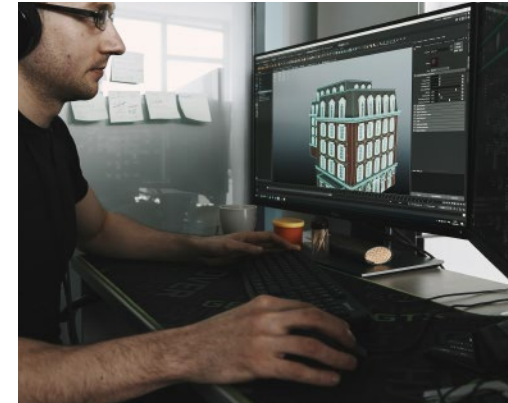
Structural & thermal analysis

We utilize software to analyze system behavior under various wind and thermal load conditions.



System design

We create customized profiles tailored to each project, ensuring proven system performance and reliability.



Modeling

We use 3D modeling to detect clashes between facade elements and the surrounding construction.

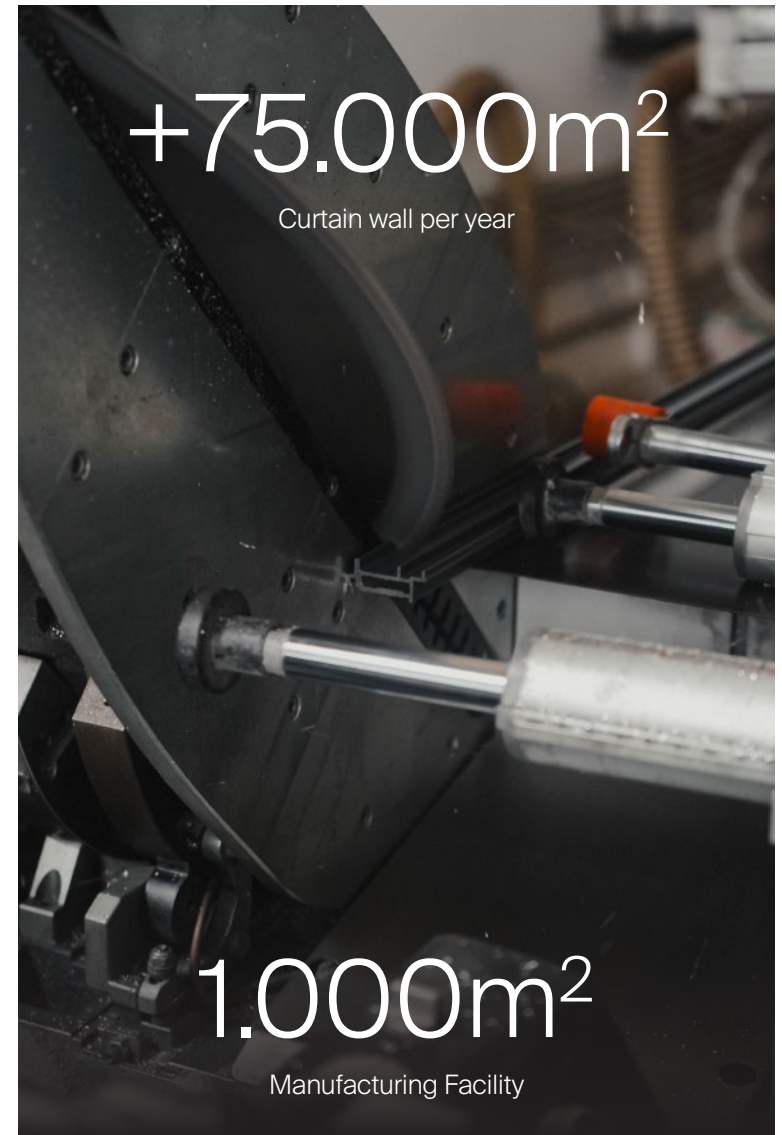
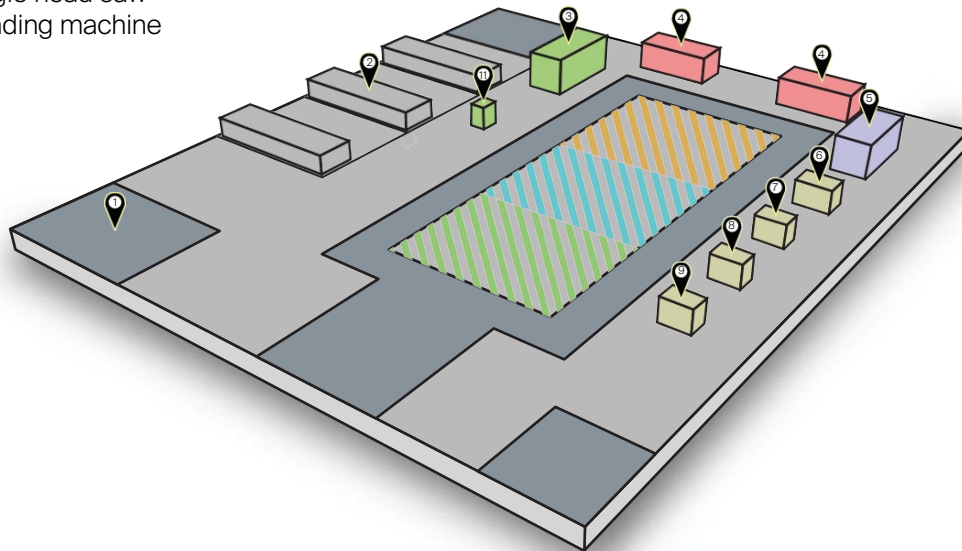


PRODUCTION

The advanced production system provides high-level product quality with continuous control and monitoring on all stages of the production cycle. ALCA is certified for all of the company's specific products, such as curtain walls, door and window frames, roof lights, industrial doors and interior doors.

The automated production lines include:

1. Offices
2. Storage
3. 3D CNC
4. Cutting machines
5. Notching machine
6. Punching machine
7. Crimping machine
8. End milling machine
9. Copy milling machine
10. Single head saw
11. Bending machine



PARTNERS



KEY PROJECTS





Tirana's Rock

Tirana's Rock is a mixed-use project that – at 85 metres tall and sculpted into the shape of a bust of Albania's national hero – will be among the world's largest buildings that double as a figurative sculpture. Wrapped in curving balconies that form the shape of the head of Skanderbeg, the building will be an iconic landmark at the very centre of Albania's capital, celebrating and assimilating into the country's cultural history while giving Tirana a unique identity unlike any other capital city.

Client: ANA & V&V Sh.p.k
Location: Tirana, Albania
Architects: MVRDV

MVRDV

Year: On-Going
Type: Residential, Commercial
Custom facade, 10.000 sqm
Parapet 6.000 sqm







Vertical Forest

Vertical Forest Tirana, designed by Stefano Boeri Architetti, is a 21-storey residential tower, featuring 550 square meters of green surface. The facade seamlessly integrates with the nearby Grand Park and the detailed craftsmanship of our workers enhance the building's aesthetic appeal while contributing to sustainability by providing natural insulation and improving air quality. We were responsible for the entire custom façade of the building.

Client: Gener 2 sh.p.k
Location: Tirana, Albania
Architects: Stefano Boeri

BOERI
STEFANO
BOERI
ARCHITETTI

Year: 2024
Type: Residential
Custom facade, 7.000 sqm







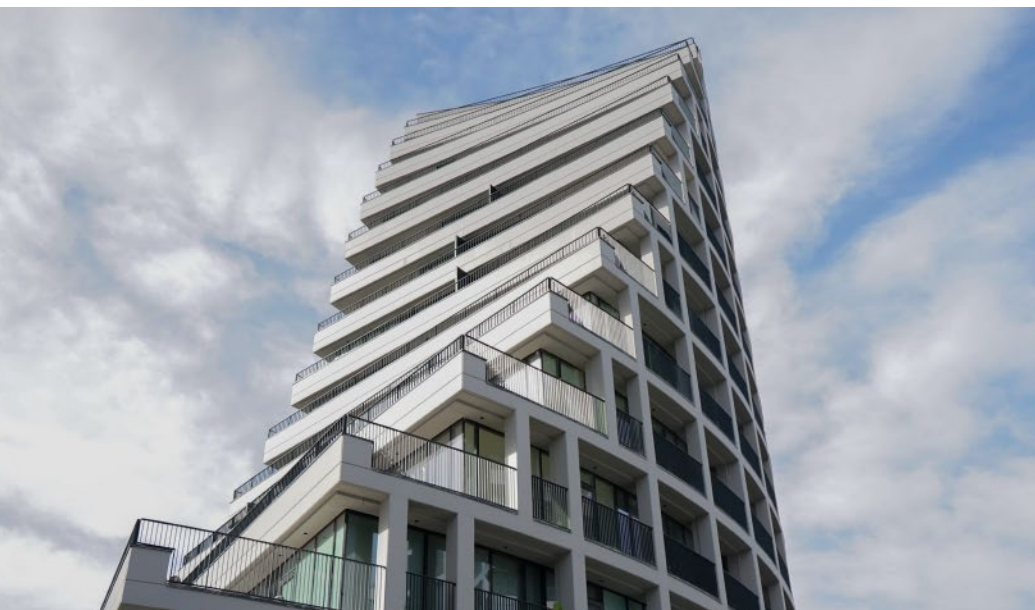
Lake View Residences

Lake View Residences is a complex of five building blocks designed by JA Joubert Architecture. The buildings are designed to slope and fold into the site, maximizing views of the city skyline and surrounding mountains. End houses have full-width terraces with sunken planters for greenery and shade. ALCA was responsible for the design, production, and installation of the entire façade of the complex, consisting of 26,000 sqm of curtain walls.

Client: Gener 2 sh.p.k
Location: Tirana, Albania
Architects: Marc Joubert (JA)

JA

Year: 2024
Type: Residential, Commercial
Stick facade, 26.000 sqm







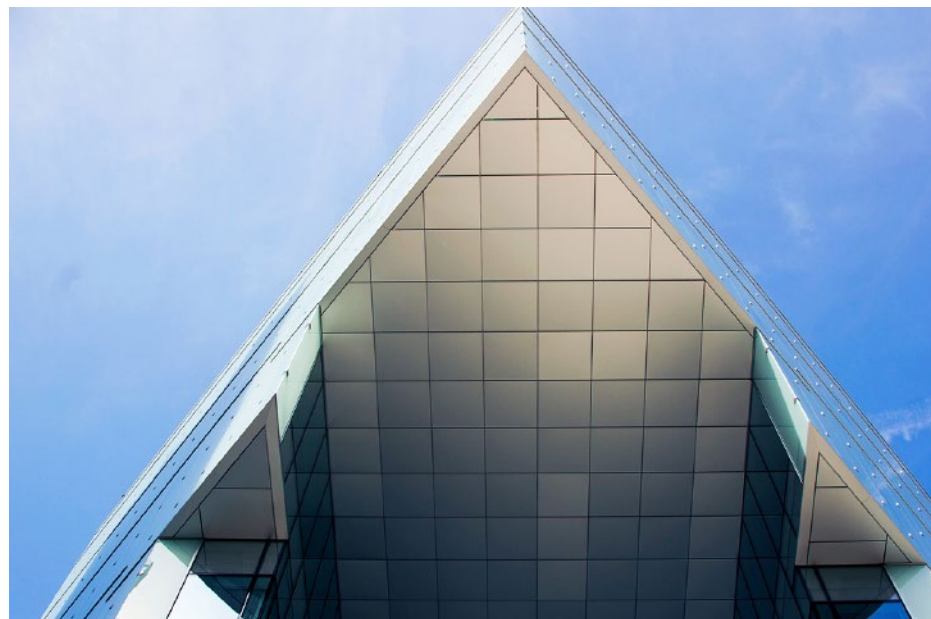
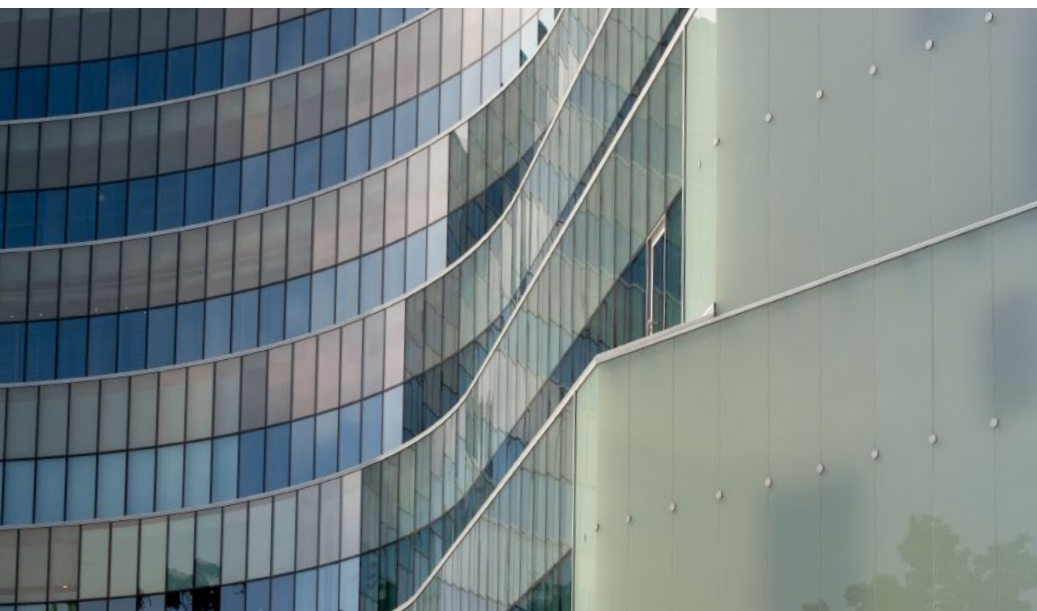
Toptani Shopping Center

Toptani Shopping Center spans over 13,000 sqm of stick and cladding facades. Completed in 2017 and designed by MVRDV, It offers a mix of retail stores, entertainment facilities, and dining options, providing a comprehensive shopping experience. The façade, accessible through stairs and balconies, engages the city and extends urban life

Client: Gener 2 Sh.p.k
Location: Tirana, Albania
Architects: MVRDV

MVRDV

Year: 2017
Type: Commercial
Stick facade and claddings,
13.680 sqm



 **RING**
TIRANARING CENTER



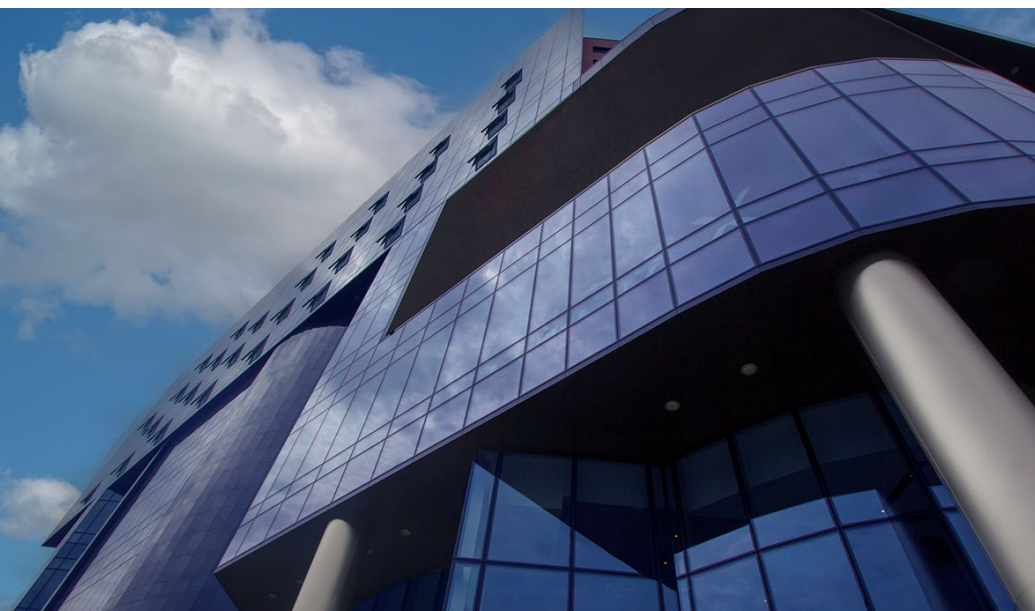


Ring Center

Tirana Ring Center is a mix of commercial and residential spaces covering a total of 51,000 m², among which a stick facade which incorporates screens for advertisements. Completed in 2014, the center offers a comprehensive experience with over 70 brands, entertainment spaces, restaurants, and high comfort amenities, including a food court and extensive parking facilities.

Client: Vigand Sh.p.k
Location: Tirana, Albania
Architects: Ark. Spiro Bakallboshi & Ark. Suela Veizoti

Year: 2014
Type: Commercial
Stick facade 5.120 sqm







Millenium Building

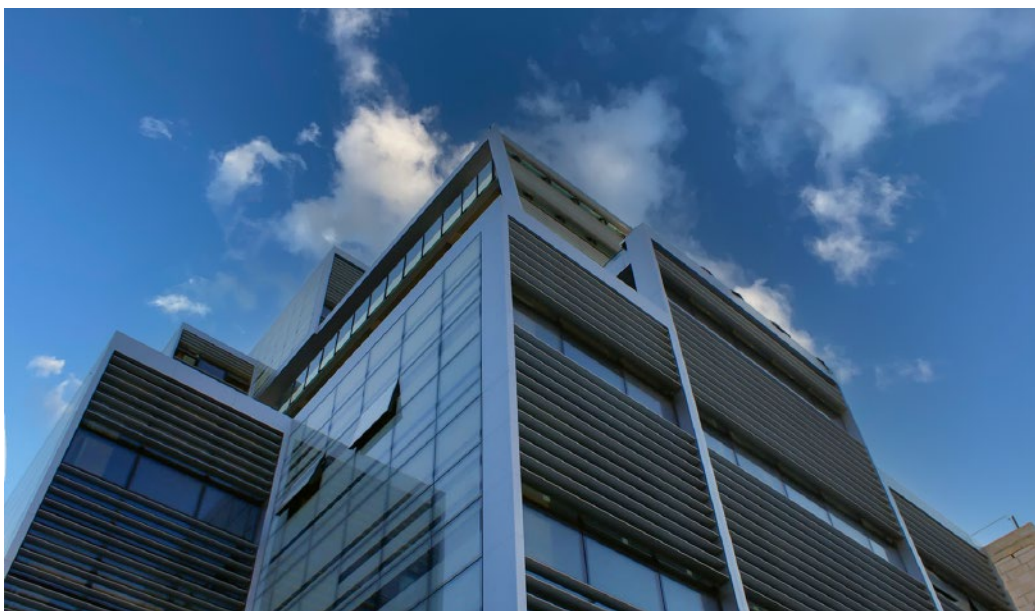
Millenium Building is a multifunctional building combining retail and office spaces. Completed in 2013, the nine-story, 40-meter-high structure offers around 10,000 m² of space. The façade is made of 60,000 kg of aluminum and the design features high-quality doors, windows, and shutters, ensuring regulatory compliance. The finishes, coordinated by world-renowned Architecturestudio, use Anthracite Grey and oxidized silver for a harmonious aesthetic.

XX CONCORSO
INTERNAZIONALE
SISTEMA D'AUTORE
METRA
2013

Client: Beta Sh.p.k
Location: Tirana, Albania
Architects: AS architecturestudio

architecturestudio,

Year: 2013
Type: Mixed
Stick facade and shading system,
6,540 sqm







ABA Business Center

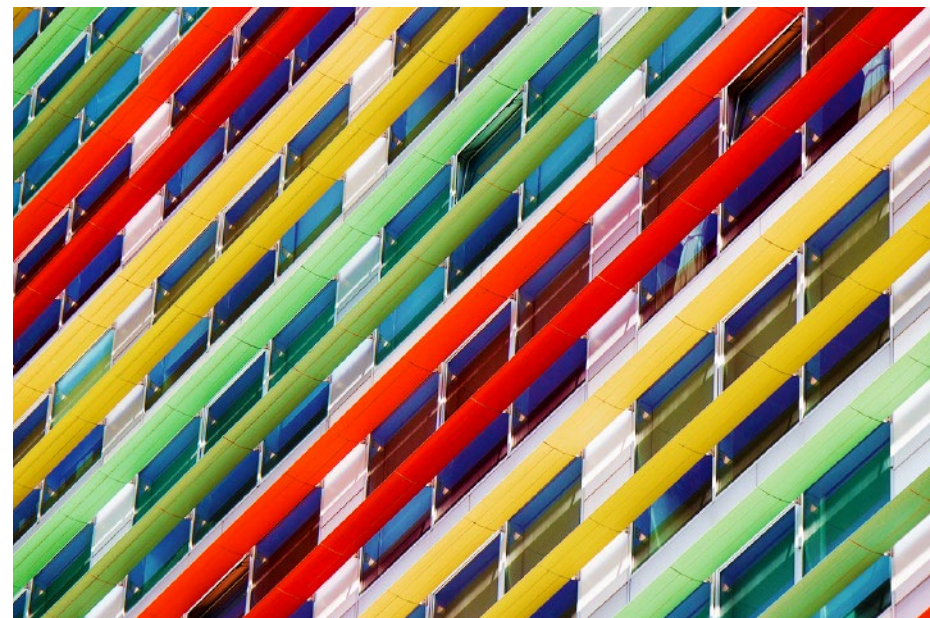
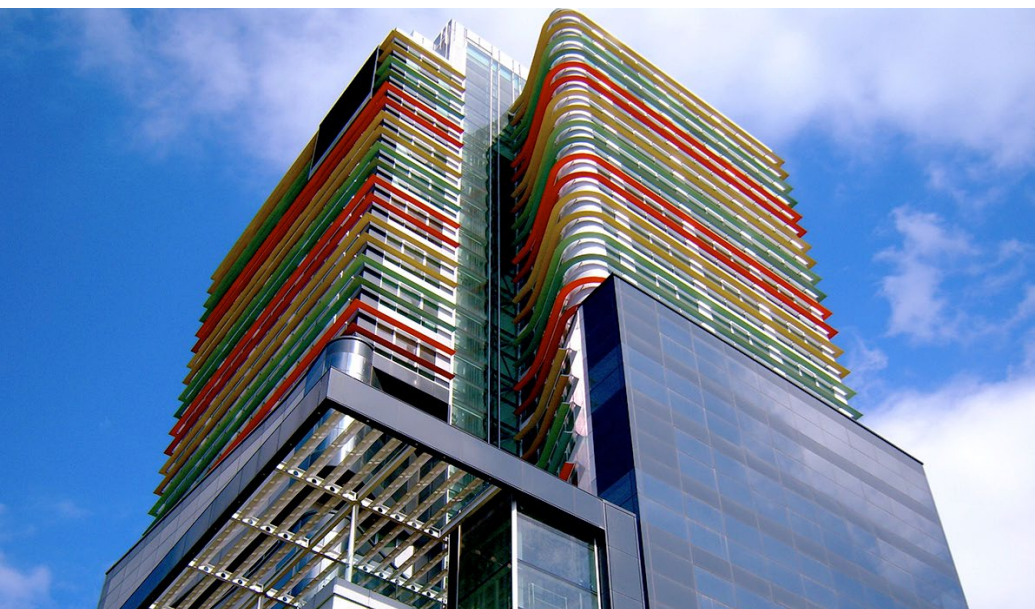
Completed in 2008 and designed by Bolles+Wilson, ABA Business Center was the tallest building in Albania at that time. This 83-meter high mixed-use high-rise in Tirana features 21 floors above ground and 3 underground levels for parking. The building encompasses 12,000 sqm, combining a stick façade with a shading system, and serves as a modern architectural landmark, blending office and commercial spaces.

XVI CONCORSO
SISTEMA D'AUTORE
METRA
2008

Client: Gener 2 Sh.p.k
Location: Tirana, Albania
Architects: Bolles+Wilson
GmbH & Co. KG

BOLLES+WILSON

Year: 2008
Type: Commercial
Stick facade and shading system,
12.000 sqm



Salillari Residence

Salillari Residence is a residential complex located near the Tirana Zoo and just a short distance from the Artificial Lake. ALCA took care of the whole 5,000 sqm ventilated façade, partnering with Ceramiche Refin for the stunning "river" collection tiles that, thanks to the enveloping aesthetic effect and the soft relief structure, create a precise and sophisticated identity for the whole building.

Client: Salillari Sh.p.k
Location: Tirana, Albania
Architects: Salillari Sh.p.k



Year: 2024
Type: Residential
Ventilated facade 5.000 sqm





A.N.T.A - TIA Airport

ALBCONTROL is a state-owned joint-stock company under the Ministry of Economy, Culture, and Innovation, dedicated to providing safe and high-quality air navigation services within Albanian airspace. Located in Rinas, v, ALBCONTROL is a crucial player in the regional air traffic management sector, participating in international cooperation initiatives like the Southeast Europe Common Sky Initiative (SECSI) FRA. The company ensures efficient and secure air travel by managing takeoffs, landings, and overflights in Albania.

Client: ALBCONTROL
Location: Tirana, Albania

Year: 2011
Type: Transportation
Stick facade 3.620 sqm



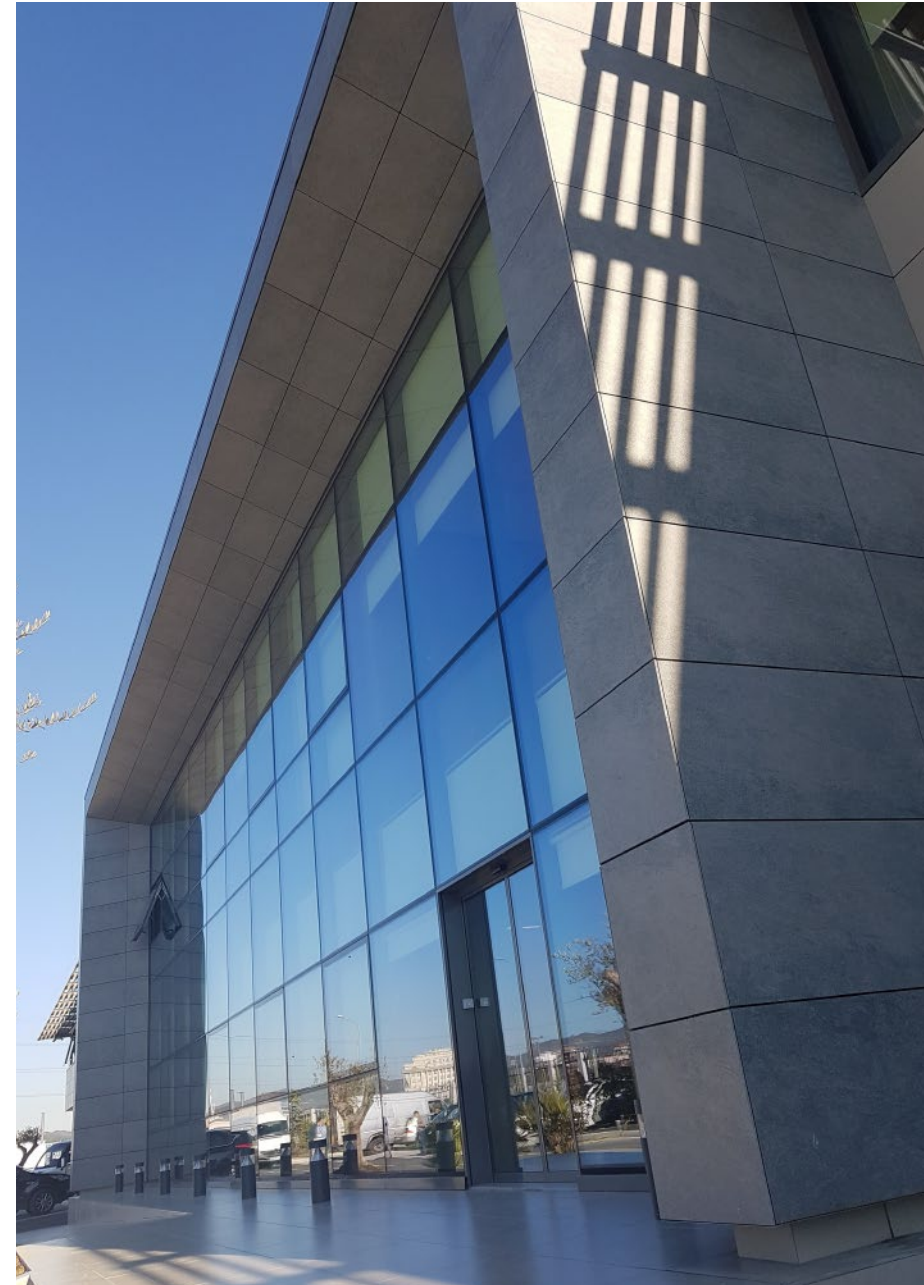
InfoSoft Group

Algrafika, founded in 1999, part of InfoSoft Group is the largest independent trading company in Albania. It supplies paper and cardboard to over 300 printing houses. The company's headquarters in Tirana features a modern office facility of 1,600 m² and a warehouse capacity of 8,200 m². ALCA, did the glass facades (E85 - Etem), ventilated facades with Gres porcelain, various types of doors (E75 - Etem, automatic doors by Geze), windows (E45 / E1000 - Etem), and aluminum composite panel.

Client: InfoSoft Sh.p.k , Algrafika Sh.p.k
Location: Tirana, Albania
Architects: ALCA Sh.p.k

ALCA

Year: 2017
Type: Office
Stick facade, cladding and shading system 3.200 sqm





Costa Container Lines

Located in Sampierdarena within the Fiumara complex in Genoa, the project involved renovating a 19th-century warehouse, previously used as a projectiles factory, into modern offices for Costa Container Lines. The renovation preserved the building's industrial heritage, maintaining its cast iron columns, wooden beams, and floors. The 7,000-square-meter space features a full-height central area with natural lighting, enclosed by a glazed roof and large windows supported by a metal structure, and steel bands highlighting the floors' sequence.

Client: COOPSETTE S.C.A.R.L.
Location: Genova, Italy
Architects: Arch. Nicolò De Mari
Casareto dal Verme

Year: 2004
Type: Commercial
Project surface: 22.000 sqm



ALCA Sh.p.k

In 2005, four years after the company's foundation, we completed the facades of our own building with an all-glass design. This project marked a significant milestone for us and set a strong foundation for our continued success and expansion.

Client: ALCA Sh.p.k
Location: Tirana, Albania
Architects: ALCA Sh.p.k

ALCA

Year: 2005
Type: Office
Stick facade, 700 sqm





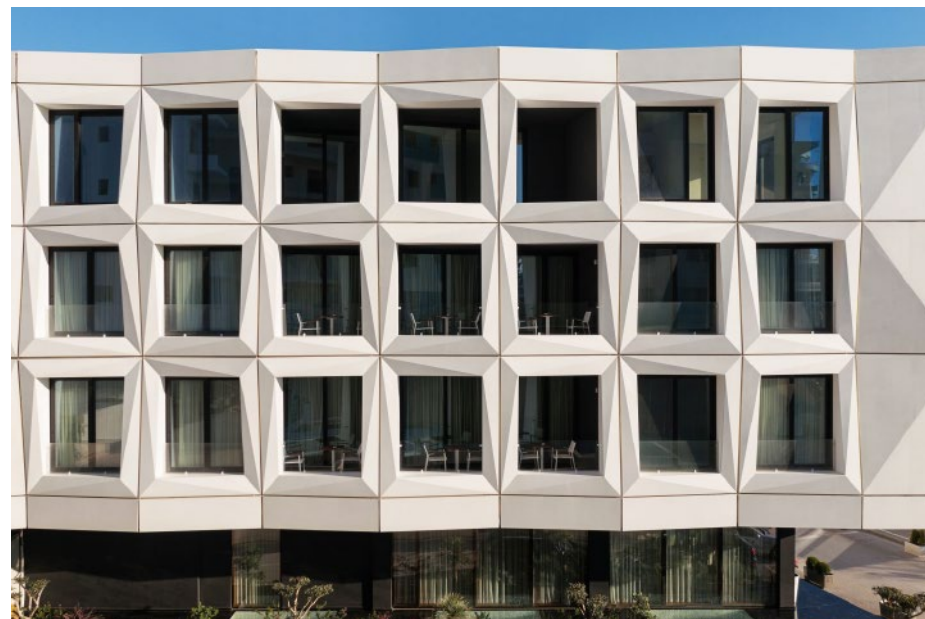
Hotel Chic

The first impression when you look at this building is that reminds you of an origami. The sharpened edges, the movement of the modules in all the directions, the wide windows of the 3 upper levels make this building a unique one. Facades are the most striking and visible parts of the hotel and are one of the main contributors to creating comfortable environments and capable to adapt to the environmental conditions of the place where it is located.

Client: Chic Botique Hotel
Location: Vlorë, Albania
Architects: Stile Progetti Associates

StileProgetti
Associated

Year: 2019
Type: Hospitality
Stick Façade 500 sqm



Hotel Butrinti

Founded in 1968, Hotel Butrinti is one of the most historical hotels on the southern riviera. ALCA was entrusted with the task of renovating the entire hotel's façade. This luxurious 5-star hotel now boasts an updated exterior that complements its rich history and prime location, enhancing its elegance and appeal for discerning guests.

Client: Hotel Butrinti
Location: Sarandë, Albania

Year: 2019
Type: Hospitality
Ventilated Façade 2.000 sqm





Hotel Xheko Imperial

Founded in 1993, this luxurious hotel has welcomed a distinguished clientele of ambassadors, diplomatic corps, artists, and international businesspeople, maintaining a sterling reputation. ALCA was in charge of all the exterior's renovation related to windows and balcony doors.

Client: Xheko Sh.p.k.
Location: Tirana, Albania

Year: 2004
Type: Commercial
Façade 690 sqm

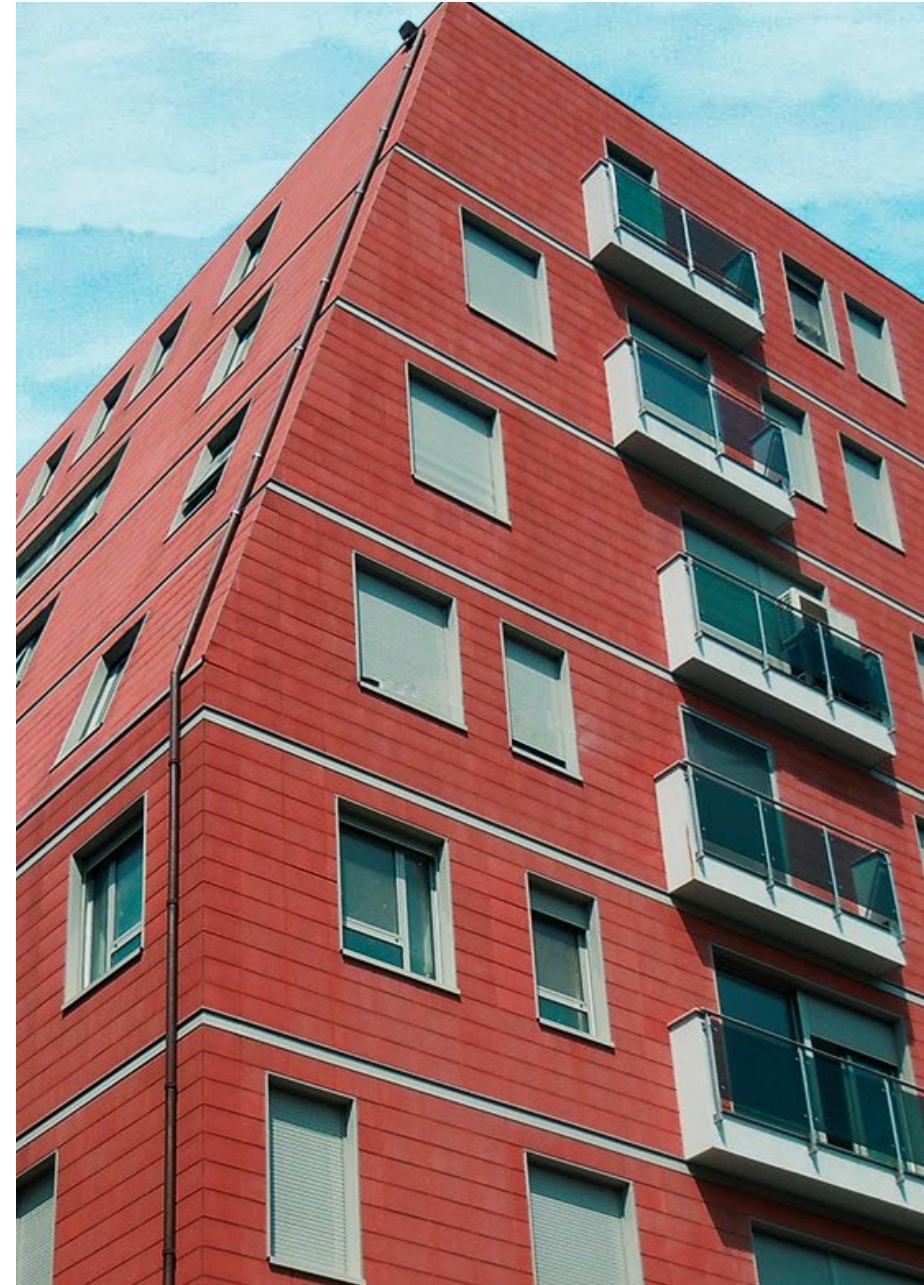


Vila Antonela

Completed in 2008, this residential building is composed of 9 floors and has a façade of more than 6.000 sqm. ALCA was responsible for the whole production and installation of the façades.

Client: BETA Sh.p.k.
Location: Tirana, Albania
Architects: Studio Comi

Year: 2008
Type: Residential
Stick façade 6.000 sqm



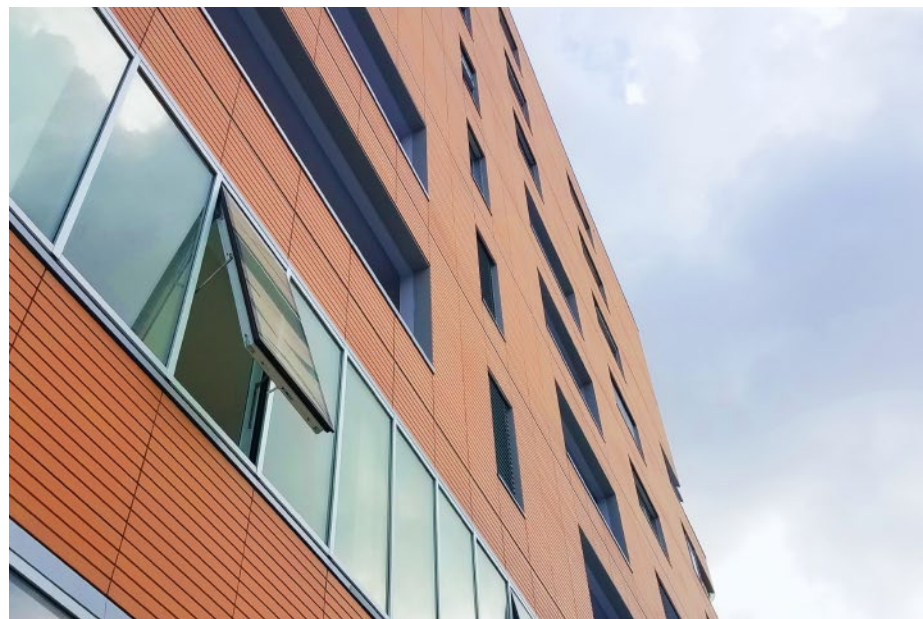


Investim Konstruksion Grapshi

Completed in 2019, this residential building is composed of 9 floors and has a façade of more than 3.000 sqm. ALCA was responsible for the whole production and installation of the glass and ventilated facades.

Client: Investim Konstruksion Grapshi
Location: Tirana, Albania
Architects: Studio Comi

Year: 2019
Type: Residential
Façade 3.200 sqm





+355 69 403 7000
info@alca.al



SH2 Highway | km.11
1051, Tirana, Albania

www.alca.al

